

AIRNOW

compression services



Centrifugal Compressor Rental Specialists

AirNow Industrial Compression Services specializes in high capacity, electric motor driven, compressed air solutions to meet supplemental or temporary requirements



AirNow Compressor Packages

- Oil-Free Centrifugal Compressors
- 1,800 to 24,000 CFM Capacities
- 450 to 4000 Horsepower Packages
- Electric Motor Driven
- 460V / 2300V / 4160V Options
- Onboard Starter and Controls

Reasons to Use AirNow Rentals:

- Simple Installation
- Provides Highest Reliability
- Compact Physical Size
- High Flow Capacities
- Low Operating Noise Levels
- Designed to Operate 24/7



Additional AirNow Benefits:

- No Process Contamination
- No Emissions Generated
- No Refueling Required
- No Dedicated Operators Needed

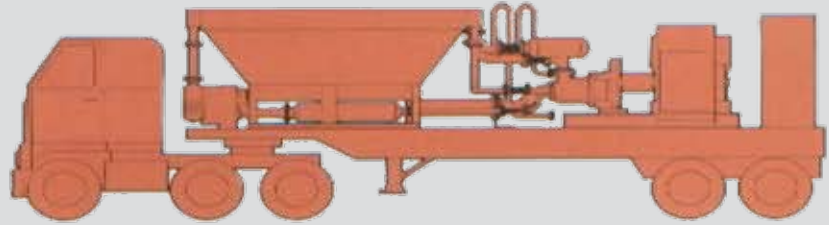
Compressor Package Data

Model	C-18	C-25	C-70	C-90	C-210
Volume, ICFM	1,800	2,500	7,000	9,000	21,000
Discharge Pressure, PSIG	125	125/150	150	50	90
Air Connection	3' Flange	3" Flange	6" flange	6" flange	10" flange
Water Flow, gpm	Air-cooled	178	396	370	1000
Water Connection	Air-cooled	2.0/2.5"	6"	6"	8"
Aftercooling To, F°	120°	120°	120°	120°	120°
Motor Horsepower	450	700	1500	1750	4000
Motor Voltage	460	2300/4160	4160	4160	4160
Running Amps	580	135/73	213	213	500
In-Rush Amps	1900	954/596	1260	1260	2700
Auxiliary Power	Included	230/3/60	Included	Included	460/3/60
Startup Air, CFM	Included	20	20	20	20

Package Dimensions (Est)

Length	40'	24'	30'	30'	40'
Width	8'	8'	8'	8'	8'
Height	12'5"	9'5"	9'5"	9'7"	10'
Lbs	33,000	32,000	42,000	63,000	70,000
	Trailer Mounted				

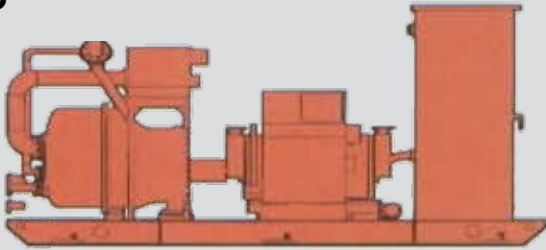
TMC-18



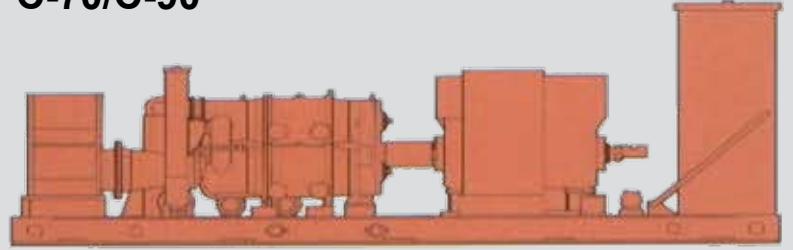
Technical Specifications

Model	Length	Width	Height	Weight	Capacity	HP	Motor	Environment
TMC-18	30'0"	8'0"	12'6"	32,000 lb.	1800 ICFM at 125 PSIG	450 w/1.25 SF	460v, 3-phase, 60-cycle induction motor, with 460v, reduced voltage starting	Operates in ambient conditions (0-110°F)

C-25



C-70/C-90



Technical Specifications

Model	Length	Width	Height	Weight	Capacity	HP	Motor	Environment
C-25 (73 series)	24'2"	8'	9'6"	31,600 lb.	2500 ICFM	700	2300/4160v, 3-phase, 60-cycle Induction motor with either 2300v or 4160v starters	Operates in ambient conditions (0-110°F)
C-25 (75 and up series)	17'2"	8'	9'8"	26,600 lb.	2500 ICFM	700		
C-70	26'8"	8'	9'9"	56,800 lb.	7000 ICFM	1750	2300/4160v, 3-phase, 60-cycle Induction motor and 4160v reduced voltage starter	Operates in ambient conditions (0-110°F)
C-90	26'8"	8'	9'9"	56,800 lb.	9000 ICFM @ 50 PSIG	1750	2300/4160v, 3-phase, 60-cycle Induction motor and 4160 reduced voltage starter	Operates in ambient conditions (0-110°F)

C-210

Model	Length	Width	Height	Weight	Capacity	HP	Motor	Environment
C-210** Compressor Motor Inlet Filter Motor Starter	36'11"	13'2"	11'1"	67,000 lb.	21,000 ICFM @ 90 PSIG	4000	4160v, 3-phase Induction motor	Operates in ambient conditions (0-110°F)
	3'8"	2'10"	8'1"					

**The "Big Kahuna", C-210 unit is not shipped on a single skid.

Headquarters:

AirNow Industrial Compression
8150 N. Central Expressway
Suite 1525
Dallas, Texas 75206
Phone 1-972-861-1200

Equipment Depot:

AirNow Industrial Compression
801 Industrial Park South
Davis, Oklahoma 73030
Phone 1-580-369-2900